

# The PLD Initiative



Ministry of Education  
SINGAPORE

As part of the *National Digital Literacy Programme (NDLP)*, every secondary school student will own a *Personal Learning Device (PLD)*.

## Aims of the PLD Initiative



**Enhance Teaching & Learning**



**Support Self-Directed and Collaborative Learning**



**Support Development of Digital Literacy**

## Supporting Safe and Effective Use of PLD

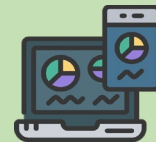
MOE has put in place measures to provide students with a safer digital learning environment:



**Cyber Wellness Education**



**School-Based Learning Routines**



**Device Management Application (DMA)**

## School-Prescribed PLD Bundle

The school-prescribed PLD bundle supports the school's learning programme. PLD specifications have been tested to ensure that they are able to support the school's learning activities (e.g. use of SLS)



### Ensuring Device Affordability

PLD models have been chosen to strike a balance between power and affordability. Students can pay for the PLD bundle through Edusave. Subsidies are available for eligible students in need of financial assistance.\*



### Includes Warranty & Insurance

The cost of the PLD bundle includes a 3-year insurance and warranty, which allows for two repairs or one replacement. Insurance coverage includes accidental damage and theft of device.^



### Collection Service for Repairs

The cost also includes a fortnightly collection service provided by the contractors for schools to send in damaged devices for repairs.

\*Students may approach their schools if they require financial assistance.

^The insurance coverage is only applicable to situations of damages and loss where the student has taken precautions to safeguard the device.



# DMA After-School Parent Options

Device Management Application (DMA) software is installed in students' PLDs to provide a safer digital learning environment, and to prevent misuse of the device. Parents/guardians can choose between these 3 options to suit their preferences for managing the PLDs **after school hours**.

	DEFAULT	OPTION A Modify DMA settings	OPTION B Disable DMA settings
<b>FILTERING OF WEB CONTENT</b>	MOE / School sets the level of filtering	Parent can apply additional filters	No content filtering
<b>CONTROL OF APPLICATIONS</b>	Parent cannot install additional applications	Parent can install additional applications*	Parent can install additional applications*
<b>LIMITS TO SCREEN TIME</b>	School sets limits for screen time	Parent can modify limits for screen time	No limits to screen time
<b>MONITORING OF CYBER ACTIVITIES</b>	Parent can monitor child's browser history	Parent can monitor child's browser history	No data is collected Parent cannot monitor child's use of the device through the DMA



Opting for the Default DMA setting for after-school use is the best option for parents who prefer not to or do not feel ready to manage their child's device use on their own.

## What's next?

- Parents can request to change their DMA option. The request will be processed by the school on a monthly basis. Please email Ms Samantha Teng ([samantha\\_alex\\_teng@moe.edu.sg](mailto:samantha_alex_teng@moe.edu.sg))

\*Applications installed by parents/guardians and/or students after school hours will be disabled during school hours.